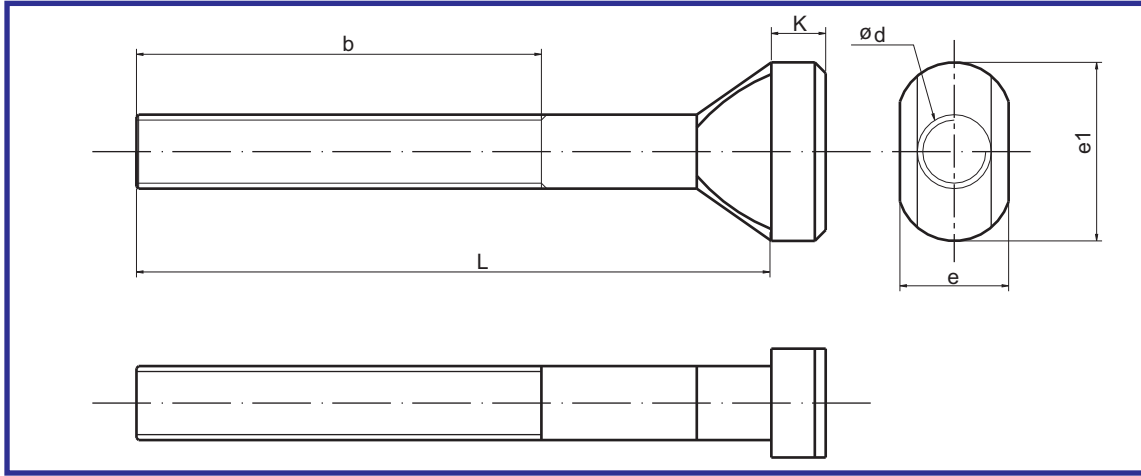


## ► T-Bolt



**Material :-** En8d

**Hardness :-** Core 28-30 HRC (Toughened)

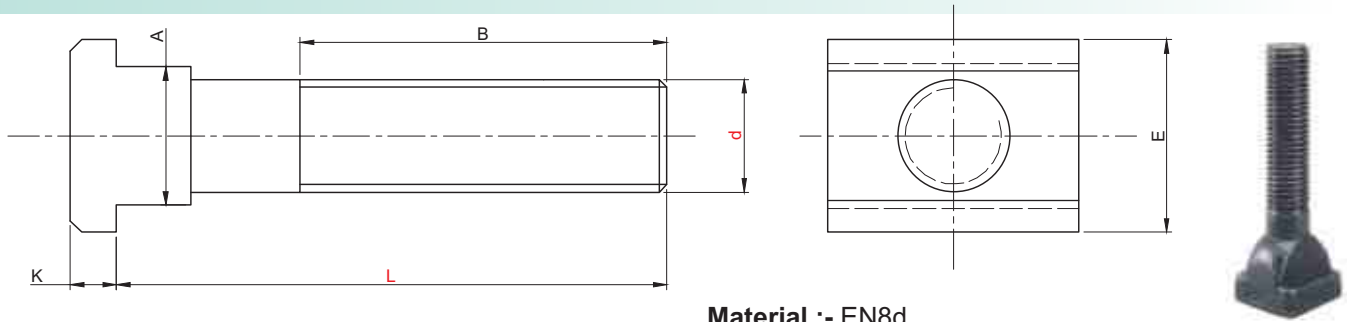
**Surface Treatment :-** Blackodised

CODE	SIZE Ø d	WIDTH e	HEAD DIA. e1	COLLAR K	LENGTH L	THREAD LENGTH b
T-BOLT M 8X50					50	30
T-BOLT M 8X60	M8	13	26	6	60	35
T-BOLT M 8X80					80	40
T-BOLT M 8X100					100	60
T-BOLT M 10X50					50	30
T-BOLT M 10X60					60	35
T-BOLT M 10X80	M10	15	30	6	80	40
T-BOLT M 10X100					100	60
T-BOLT M 10X125					125	80
T-BOLT M 12X60					60	35
T-BOLT M 12X80					80	40
T-BOLT M 12X100	M12	18	24	7	100	60
T-BOLT M 12X125					125	80
T-BOLT M 12X160					160	100
T-BOLT M-16X100					100	60
T-BOLT M-16X125	M16	25	32	9	125	80
T-BOLT M-16X160					160	100
T-BOLT M-16X200					200	125
T-BOLT M-16X250					250	155
T-BOLT M-16X300					300	190
T-BOLT M-20X100					100	65
T-BOLT M-20X125					125	80
T-BOLT M-20X160	M20	32	40	12	160	100
T-BOLT M-20X200					200	125
T-BOLT M-20X250					250	155
T-BOLT M-20X300					300	190
T-BOLT M-24X100					100	65
T-BOLT M-24X125					125	80
T-BOLT M-24X160	M24	40	48	16	160	100
T-BOLT M-24X200					200	125
T-BOLT M-24X250					250	155
T-BOLT M-24X300					300	190

**Order Type :-** Code

**Example :-** T-Bolt M-20X250

# T-Bolt - Heavyduty



**Material :- EN8d**  
**Hardness :- 28 - 32 HRC**

Type	A Suitable for t-Bolt size	E	K	L	d Thread size	B	N.W Kgs
T-Bolt Heavy	12	18	7	80	M12	40	0.08
				100		60	0.1
				160		100	0.14
	14	22	8	60	M12	35	0.09
				80		55	0.1
				100		65	0.12
				125		80	0.14
				160		100	0.16
				200		125	0.19
	16	25	9	80	M16	40	0.17
				130		80	0.23
				200		125	0.33
	18	28	10	80	M16	55	0.19
				100		65	0.22
				130		80	0.25
				160		100	0.29
				200		125	0.35
				250		155	0.4
				290		175	0.47
	20	32	12	110	M20	70	0.35
				150		95	0.43
				210		130	0.55
	22	35	14	110	M20	70	0.4
				150		95	0.48
				210		130	0.6
				285		170	0.76
	24	40	16	150	M24	95	0.68
				210		130	0.87
28	44	18	110	M24	65	0.67	
			150		95	0.79	
			210		130	0.96	
			250		160	1.1	
			300		190	1.23	
36	54	22	200	M30	130	1.52	
			250		150	1.77	
			300		190	2.02	

**Order Type :-** Type X d X L  
**Example :-** T Bolt Heavy X M24 X 160